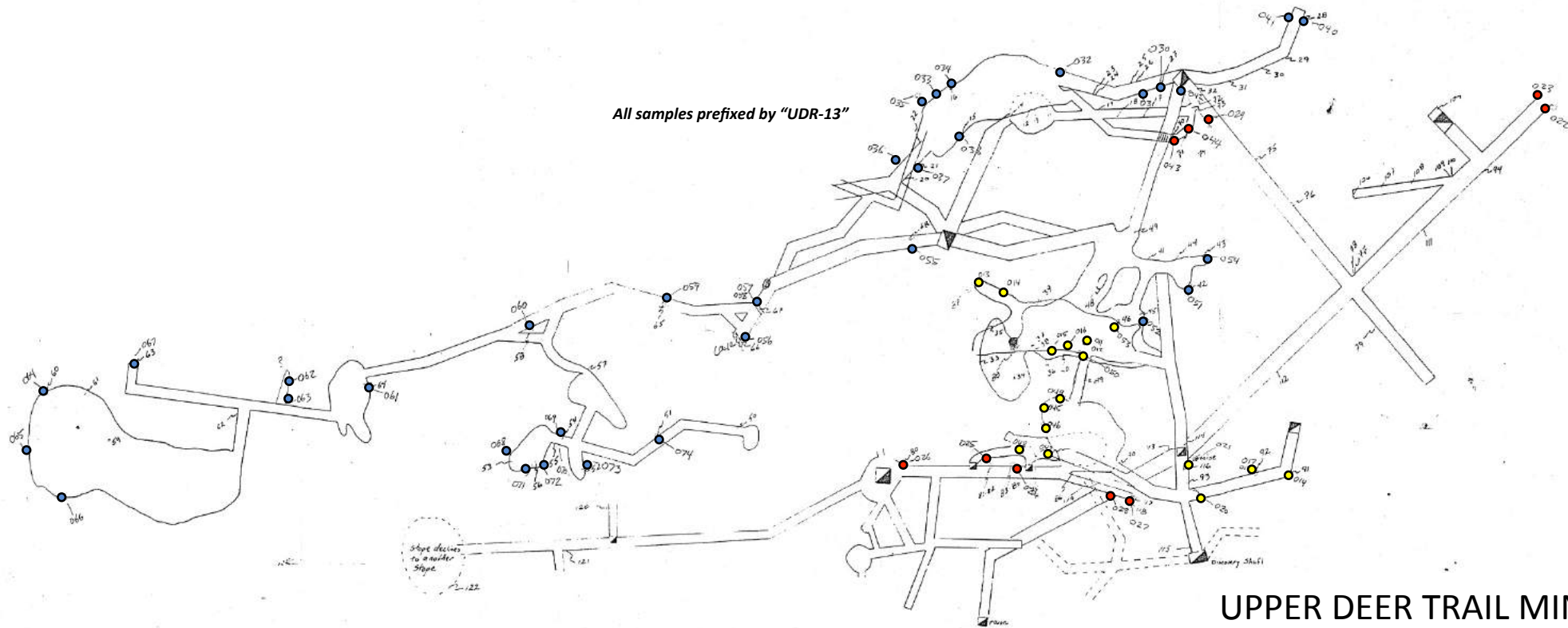


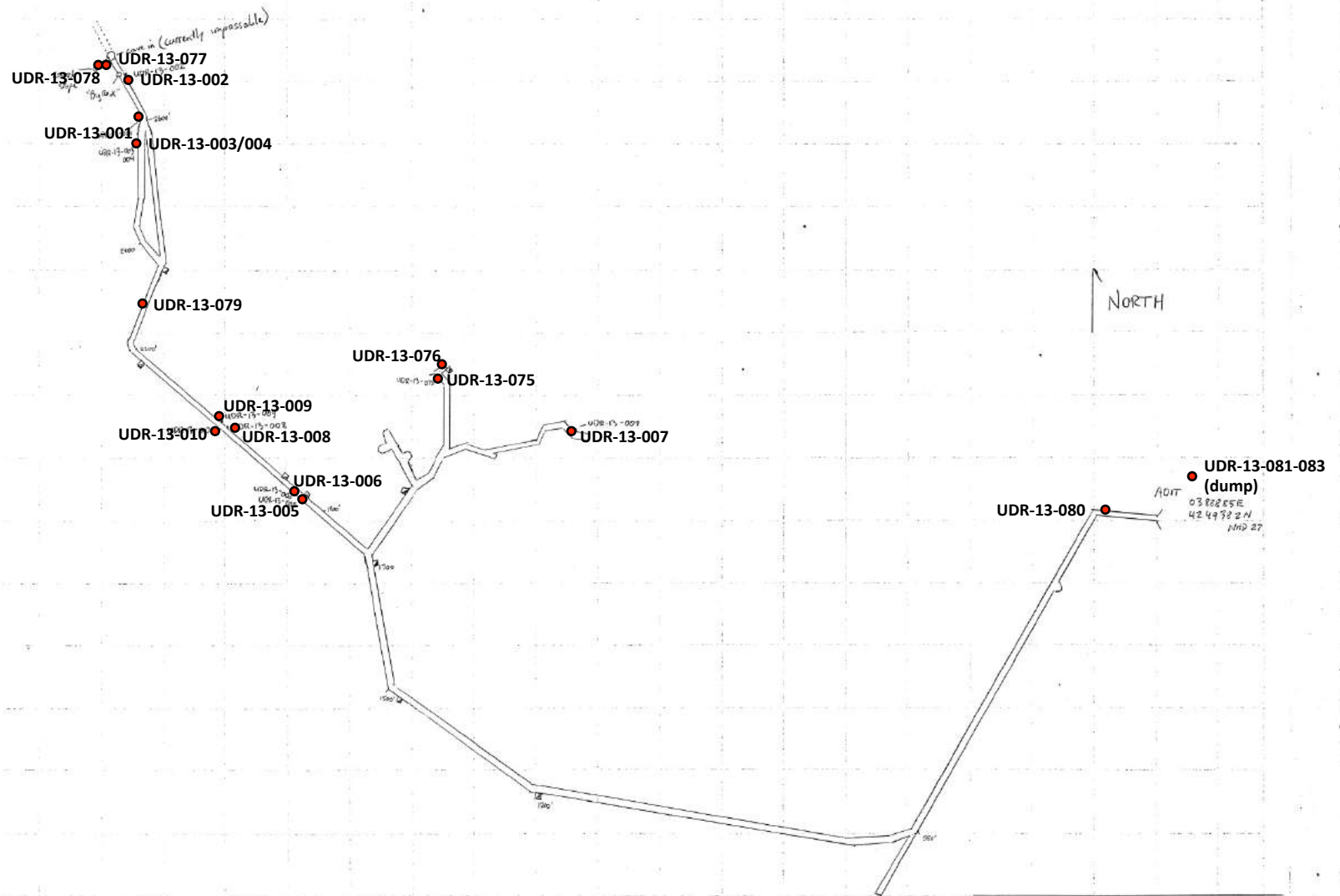
- Above #2 Tunnel Level
- #2 Tunnel Level
- Below #2 Tunnel Level

All samples prefixed by "UDR-13"



UPPER DEER TRAIL MINE Tunnel #2 Sampling

(part of the upper workings)



road in (currently impassable)
 UDR-13-077
 UDR-13-078 UDR-13-002

UDR-13-001 UDR-13-003/004

UDR-13-079

UDR-13-076 UDR-13-075

UDR-13-009 UDR-13-010 UDR-13-008

UDR-13-007

UDR-13-006 UDR-13-005

UDR-13-080 UDR-13-081-083 (dump)
 ADIT
 038885E
 4249382N
 MND 27

NORTH

UPPER DEER TRAIL MINE
 TUNNEL # 3

● #3 Tunnel Level sample

4100 ft → SCALE 1" = 100'